



LONDON STONE CO
— TRADITIONAL ~ ENGLISH ~ LUXURY —



PORTLAND STONE

HERITAGE + LUXURY

LONDON STONE Co | ALBION STONE UK

DEFINING ARCHITECTURAL LUXURY



Legacy of the Isle

Portland Stone is more than just a material; it is a 150-million-year-old legacy. London Stone Co brings this peerless British heritage to the forefront of Australian high-end commercial & residential design.

From the iconic mines of Albion Stone to the finest homes in Australia, we deliver a standard of luxury that is carved, not manufactured.



UNDERGROUND MINING



Evolution of Extraction

Albion Stone has pioneered the transition from open-cast quarrying to underground mining. This strategic shift has revolutionized our environmental stewardship.

- Minimal surface disturbance to the Portland landscape
- Zero-waste policy through precise extraction
- Significant reduction in dust and noise pollution

THE WREN LEGACY



Rebuilding London

After the Great Fire of 1666, Sir Christopher Wren chose Portland Stone to redefine the London skyline. His masterpiece, St Paul's Cathedral, remains the most famous testament to the stone's endurance and aesthetic perfection.

- Durable for over 300 years in harsh urban climates
- Unrivalled workability for intricate classical masonry
- The definitive material of the English Baroque movement

FAMOUS LONDON PROJECTS



Buckingham Palace The East Front, redesigned in 1913, utilizes the stone to represent sovereign permanence.

FAMOUS LONDON PROJECTS



St. James's market, London

Architect: Make Architects

Client: The crown estate

Stone: Various Portland stone Whitbeds

FAMOUS LONDON PROJECTS



RAF Bomber Command

Natural stone awards winner 2014 - Portland stone Basebed

FAMOUS LONDON PROJECTS



Qatar airlines, London

Architect: PLP Architecture Client: Qatar Airlines - Portland stone Grove Whitbed

LONDON PROJECTS



Highgate junior school, London

FAMOUS BRANDS



BVLGARI HOTEL



CHANEL



APPLE





THE ARCHITECT'S PALETTE

BASEBED



Basebed is the premium quality, fine grain Portland stone. It has a very tight texture with evenly distributed shell fragments. Perfect for cladding, flooring and intricate stonework.

GROVE WHITBED



Grove Whitbed is a very durable type of Portland stone with a unique fossil structure. It contains grey & white shell fragments. Suitable for paving and cladding.

ROACH



Roach, with its unique fossil structure, is ideal for stone cladding and contrasting feature stone. As seen on the award winning BBC broadcasting house



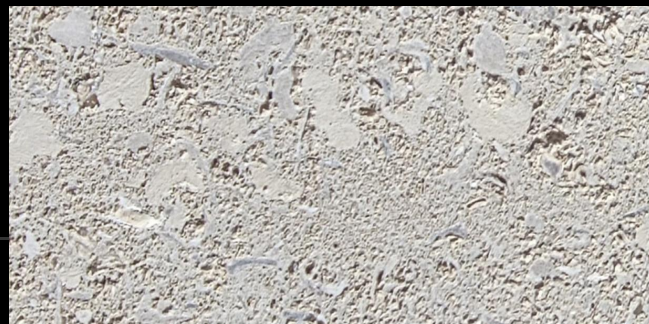
THE ARCHITECT'S PALETTE

STONEHILLS WHITBED



Stonehills Whitbed is extracted from one of our new mines. Similar to Basebed, Stonehills is mostly fine-grained with a tight, uniform matrix with some evidence of openness and voids associated with light shell banding.

JORDANS WHITBED



Jordans Whitbed has a Medium shell content. Inclusions being predominantly grey with some white fragments. The shells are randomly distributed across the stone, but due to the large clam shells, banding is evident particularly in larger slabs.

HERITAGE PORTLAND STONE



Heritage Portland Stone® includes the geological characteristic of our Whitbed seam which ties in with historical use on all Portland buildings typically pre 1970's. Heritage Portland Stone® has some areas of low shell content and some areas of high shell content. The shells are randomly distributed across the stone.

AUSTRALIAN RESIDENTIAL



FLINDERS PROJECT

ARCHITECT: WOODS BAGOT

PORTLAND STONE: GROVE WHITBED

London stone co are proud to have supplied approx 400m2 of Grove Whitbed for this project in Flinders on the Mornington Peninsula. Woods Bagot, the architect, were thrilled to secure this prestigious stone for a truly magnificent project.

The house overlooks the esplanade and has truly spectacular views.



AUSTRALIAN RESIDENTIAL



POINT LEO PROJECT

DESIGNER: MOUNT MARTHA DESIGN

PORTLAND STONE: FANCY BEACH WHITBED

London stone co supplied approx 500m2 of Fancy beach Whitbed for this home in Point Leo on the Mornington peninsula. The home is located opposite Point Leo beach. The stone was used principally as external cladding but was also used internally for a feature wall.



AUSTRALIAN RESIDENTIAL



COTTESLOE PROJECT

London stone co supplied approximately 350m² Portland stone Jordans whitbed for this coastal property in WA.



AUSTRALIAN RESIDENTIAL



TOP SECRET! TOORAK PROJECT

ARCHITECT: PAUL CONRAD

BUILDER: DAVIES HENDERSON

London stone co are currently supplying approximately 4500m2 of our Portland stone for a prestigious project in Toorak, Vic. We cannot name the project at the moment but I'm sure you have an idea...



COMMERCIAL PROJECT, CANBERRA



Flanders Memorial Garden, AWM

London stone company were proud to be involved in a project of national significance. We manufactured and supplied our beautiful Basebed for this project at the Australian war memorial in Canberra.

A BRICK FROM STONE



Innovation in Masonry

The Portland stone Heritage Brick offers the luxury of Portland Stone in a versatile, modern format. By utilizing offcuts from block extraction, we create a product that is both sustainable and aesthetically superior.

Perfect for contemporary residential facades that require the warmth of natural limestone with the precision of brickwork.

The Portland stone brick is ultra low carbon and offers an entry into Portland stone at an affordable price point.

Available in standard brick size 215×65×102 and our long format 440×50×102





THE ETHICAL CHOICE

0.05

Low Carbon Footprint

Compared to concrete or many stone products, natural Portland Stone carries exceptionally low embodied carbon. It is the gold standard for architects targeting high-performance sustainable buildings.

Certified to **BES 6001** for responsible sourcing, ensuring every block is ethically managed from mine to site.

BESPOKE MASONRY

Master of Detail

Our collaboration with Albion Stone allows us to offer fully bespoke masonry services. Whether it is a floating helical staircase or a custom-carved facade element, our technical team ensures precision at every millimeter.

- 3D Laser Scanning & CNC Machining
- Traditional Hand-Finishing by Master Masons
- Technical Design Assistance for Complex Geometry



GLOBAL RECOGNITION



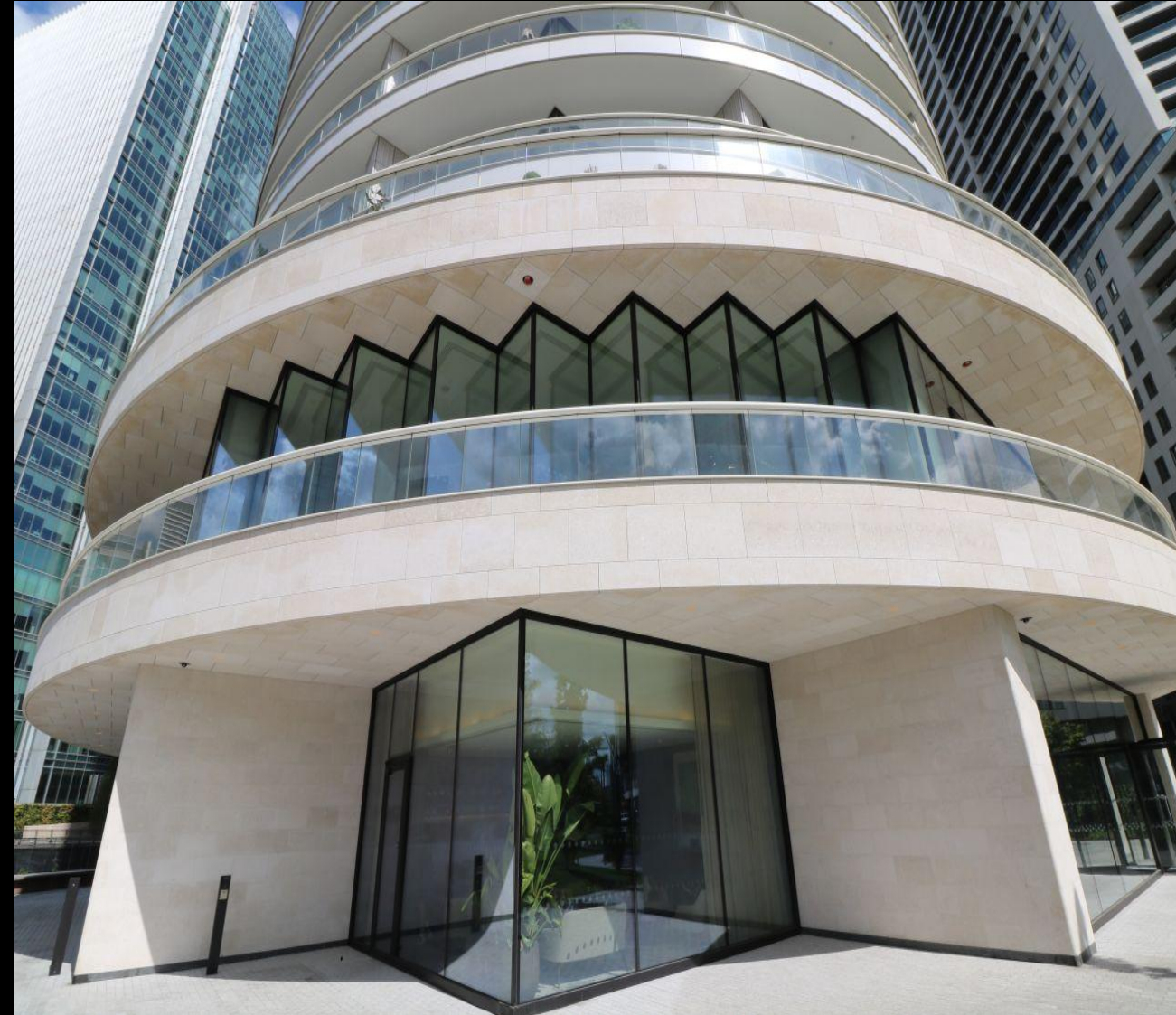
Portland Stone Accolades

Our commitment to quality has been recognized by the most prestigious bodies in architecture and stone masonry.

- Natural Stone Awards: Multiple Wins for Craftsmanship
- RIBA Approved: Supporting the world's leading architects
- Queen's Award for Enterprise: International Trade

Winner of 150+ awards

Portland stone has also been named the world's first 'Global Heritage stone'





PARTNERING WITH LONDON STONE Co

Technical Specs

Comprehensive testing data for load-bearing, thermal mass, and slip resistance (AU Standards).

Logistics

Seamless procurement from the Isle of Portland to Australian shores, managed end-to-end.

Samples

Curated sample boxes of Basebed, Whitbed, and Roach for your design studio.



LONDON STONE CO
— TRADITIONAL - ENGLISH - LUXURY —



DEFINING LUXURY

JOIN THE LEGACY

londonstone.au

Melbourne | Sydney | Perth

TECHNICAL PARTNER: ALBION STONE (UK)